



Christ the King Catholic School News & Updates

Educating Hearts, Minds, and Spirits to Become Future Servant Leaders

[Visit our Website](#)

MERRY CHRISTMAS!

We wish you a
safe, healthy,
and
Merry
Christmas!





Prayer to Our Lady of Guadalupe for the Protection from Coronavirus

*Holy Virgin of Guadalupe, Queen of the Angels
and Mother of the Americas.
We fly to you today as your beloved children.
We ask you to intercede for us with your Son, as
you did at the wedding in Cana.
Pray for us, loving Mother,
and gain for our nation and world,
and for all our families and loved ones,
the protection of your holy angels,
that we may be spared the worst of this illness.
For those already afflicted,
we ask you to obtain the grace of healing and
deliverance.
Hear the cries of those who are vulnerable and
fearful,
wipe away their tears and help them to trust.
In this time of trial and testing,
teach all of us in the Church to love one another
and to be patient and kind.
Help us to bring the peace of Jesus to our land
and to our hearts.
We come to you with confidence,
knowing that you truly are our compassionate
mother,
health of the sick and cause of our joy.
Shelter us under the mantle of your protection,
keep us in the embrace of your arms,
help us always to know the love of your Son,
Jesus. Amen.*



**Thank you for
supporting CKS
Serviam Days!**

Calendar

December 18 - CKS Virtual Mass
Dec. 21-Jan. 1 - Christmas Holiday; No School
January 4 - Classes Resume

**Video Message from
Bishop Burns:**
Click here

**Video Message from
Bishop Kelly:**
Click here

CKS COVID-19 Response Updates

**CKS Spiritual
Resources -
Click Here**

In Sincere Appreciation

The faculty and staff greatly appreciate your generous contributions to the **CKS Giving Tree**. Thank you! We are honored to serve and blessed to be a part of the CKS community.

Merry Christmas!

Click here for Updates:
Texas Department of Health and Human Services

CKS Admin. Weekly Newsletter Submissions

The CKS Admin. News is sent to CKS families from Dr. Bosco and Dr. O'Sullivan. Please submit information that you would like included in the next newsletter via email to cksnews@cks.org by Thursday, December 17th, at 12noon for the January 4th publication.

amazon smile
You shop. Amazon gives.

When you make qualifying purchases, Amazon will donate .5% to CKS. We encourage you, and ALL your family members, to go to smile.amazon.com and sign up!



On your computer, click the Menu in the upper left corner. Scroll to "Your AmazonSmile" and click.



From your Amazon App, find Settings in the Main Menu, then click on "Amazon Smile," and turn ON.



CHRIST THE KING
CATHOLIC SCHOOL DALLAS



BEEN EXPOSED TO COVID-19?

Be Informed: Know Your Next Steps

Chart provided by the Texas Medical Association COVID-19 Task Force

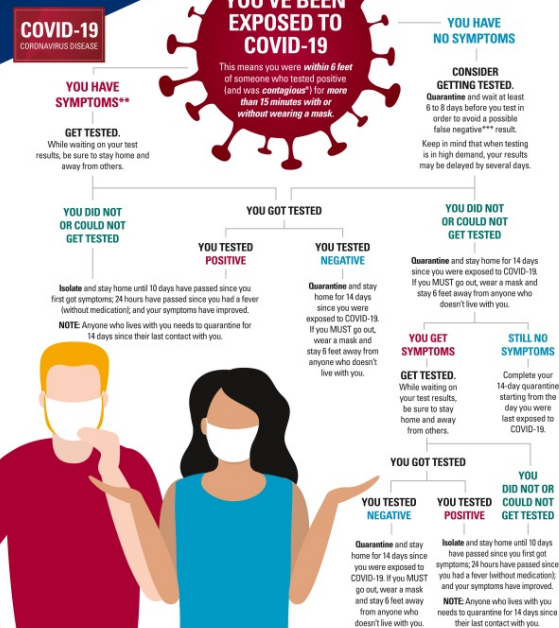
If you have trouble breathing or other serious symptoms, consult your physician for specific medical advice. This chart is intended for the general public, not health care workers.



Physicians Caring for Texans

www.texmed.org

[@texmed](https://twitter.com/texmed)
[@wearetxma](https://twitter.com/wearetxma)



After your quarantine or isolation is over, you can resume normal activities. But don't forget to wear a mask!

**People are asymptomatic less than 5 days before they start having symptoms and at least 10 days after they started having symptoms. People who have no symptoms are considered contagious starting from two days before they get tested, through at least 10 days.

**Symptoms may include fever or chills, cough, shortness of breath or difficulty breathing, loss of taste, headache, sore throat, and other symptoms.

***A false negative test result is when the test result is negative when you actually are infected with COVID-19. This may happen when you test too soon after your exposure, and there is not enough virus in your system to be detected. A false negative false-negative result is usually approximately 6-8 days from when you were first exposed before you get tested.

This document provides general information related to exposure to the COVID-19 virus. It is not medical advice and does not substitute for the advice of your physician or other health care professional. Consulting your personal physician is recommended when faced with health issues to obtain specific medical advice taking into consideration your medical condition.

Revised: Jan 13, 2020

UPDATES FROM THE PASSIVE FUND RAISING COMMITTEE



1. The **Tom Thumb Good Neighbor Program** remains the same. Please complete the attached form for yourself and your loved ones. Drop off at Tom Thumb.
2. Amazon now allows you to "turn ON" **Amazon Smile** on your phone app! Go to the Main Menu > Settings > Amazon Smile > Turn ON. We are confident this amount can skyrocket with full participation from our CKS community. Your AmazonSmile settings must be renewed yearly.
3. We are no longer collecting **Boxtops for Education**. The program has become obsolete for nominal returns. If you disagree and would like to volunteer to champion Boxtops, please contact us.



By joining the Tom Thumb Neighborhood Program, you will be earning cash for CKS everytime you shop. Link your Reward Card to CKS and CKS automatically earns 1% on qualifying purchases. Use CKS charity # 684 when filling out the form.



When you make qualifying purchases, Amazon will donate 5% to CKS. We encourage you, and ALL your family members, to go to smile.amazon.com and sign up! It's so easy:

- On your computer, click the menu in the upper left corner. Scroll to "Your Amazon Smile" and click.
- From your Amazon App, find settings in the main menu, then click on "Amazon Smile", and turn ON.

TOM THUMB GOOD NEIGHBOR PROGRAM	
DALLAS	
Complete this form to link your Loyalty account to the organization of your choice. You can choose to link up to three organizations. Contact your organization of choice and ask if they are a member of Tom Thumb Good Neighbor program or call 1-888-334-8240 to get the GNP number.	
REMARKABLE CARD NUMBER	
<div>Don't know your card number? Call Customer Care at 1-877-723-3929.</div> <div>Charity to be added to your card:</div> <div> 1. Charity # 684 (CKS) 2. Charity # _____ 3. Charity # _____ </div> <div> Charity to be deleted to your card: 1. Charity # _____ 2. Charity # _____ 3. Charity # _____ </div>	
APPLICANT NAME (PLEASE PRINT)	PHONE (linked to loyalty account)
APPLICANT SIGNATURE	DATE
PLEASE RETURN THIS FORM TO YOUR NEIGHBORHOOD TOM THUMB CUSTOMER SERVICE DESK OR EMAIL YOUR RESPONSES TO good.neighbor@tomthumb.com	
OFFICE USE ONLY: STORE # _____	
STORE INSTRUCTIONS: SEND THIS COMPLETED FORM TO THE MAILROOM - ATTN: GOOD NEIGHBOR PROGRAM	

THANKS FOR YOUR SUPPORT

IF YOU HAVE ANY PASSIVE FUNDRAISING SUGGESTIONS OR QUESTIONS ABOUT THESE PROGRAMS CONTACT RACHAL AT RACHAL.NETTUNE@GMAIL.COM OR CATHERINE AT CATHERINE@NETTUNE.ORG

A Message from the CKS Health & Safety Committee:

As we look forward to the upcoming holiday break, we ask that for the safety of our school and children, you continue to limit your social activities outside of school to include **no more than 10 people, especially when multiple CKS families are involved**. Multiple families attending large events with asymptomatic spreaders is likely to result in COVID infections that will affect the school. Please mask in situations where you are indoors with others outside your household, or outdoors and unable to space 6 feet apart. If families have been at events with known potential exposure, please seek testing for COVID.

As a reminder, please see attached TMA handout regarding how to determine if you are a contact or not. Briefly, **a contact is any person who was within 6 feet (masked or unmasked) for greater than 15 minutes total during the positive COVID case's infectious period. The infectious period begins for the positive case 48 hours before symptoms started in a symptomatic individual, or 48 hours before positive testing in an asymptomatic individual.** CDC currently recommends that asymptomatic contacts get tested. If there is any question about whether a person is a contact or not, it is better to err on the side of caution and quarantine/test.

We are grateful to you for all your attention to CKS safety protocols this year. We know that your encouragement of your children and your verbal reinforcement of the need for these changes helps them to follow the new rules. We encourage you to continue to be vigilant in mask-wearing outside of the school environment, and please continue to complete your child's daily screening. Thank you to all the parents, teachers, and staff at CKS that have worked so hard to ensure that our school remained open this fall/winter. We look forward to a healthy return to school in January.

Merry Christmas!

Sincerely,
The CKS Health and Safety Committee

Dr. Michael Tolle
Dr. Anthony Aramoonie
Dr. Christina Bourland
Mrs. Rachal Nettune
Dr. Tia Tortoriello Raymond
Dr. Matthew Simon



Christ the King Catholic School | 214-365-1234 | www.cks.org

STAY CONNECTED

